

## ALARMS AND DATA LOGGER

**Collect & Alert is dedicated to managers of industrial equipment and processes.**

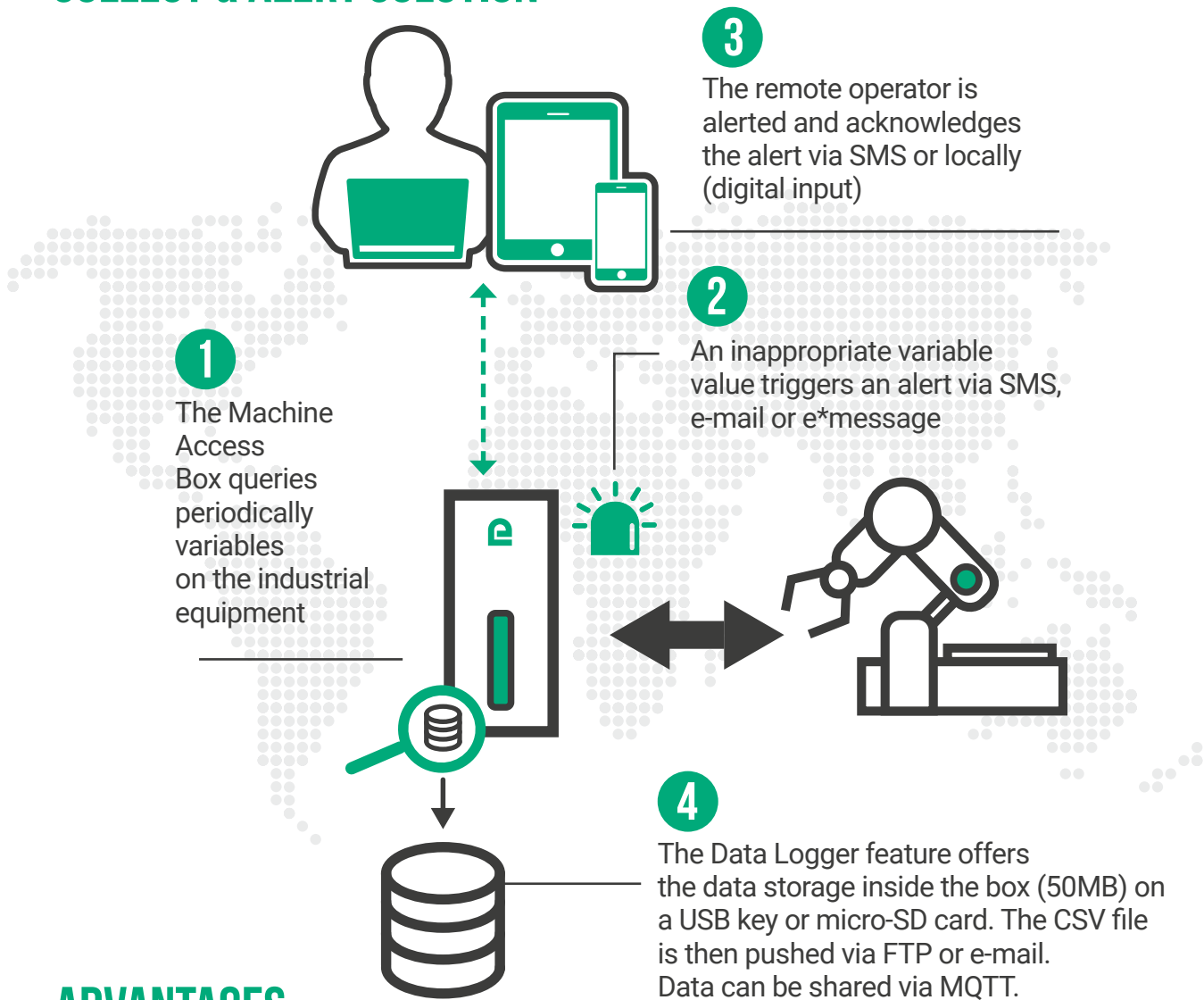
This solution is a software option for RAS & IPL products. It permits the collection, the storage and the transmission of industrial data (Data Logger) but also the alarm upload from an industrial equipment by SMS, e-mail or e\*message.

DOC\_MPR\_Collect&Alert\_Data sheet\_B (latest update 04/24/2023)

### Collect & Alert solution

- **Data collection**
  - Modbus RTU, Unitelway, ModBus TCP, OPC UA
  - Up to 128 variables
- **Data storage**
  - Internal memory (50MB)
  - USB key
  - Micro-SD card
  - Storage in the Cloud via Store4Me (option)
- **Sending data**
  - FTP server
  - email with CSV file
  - MQTTs
- **Alert management**
  - Notification by SMS or e-mail
  - Compatible with e\*message
- **Available on RAS and IPL device**
- **Compatible with Ecostruxure Machine Advisor and Mindsphere**

## COLLECT &amp; ALERT SOLUTION



## ADVANTAGES

**Solution available on RAS & IPL**

This software feature can be installed on any Machine Access Box (RAS) or industrial routers (IPL) commercialized by Etic Telecom.

**Solution compatible with the remote maintenance and monitoring: M2Me**

Collect & Alert together with the M2Me solution offers a comprehensive, secured and simple alert solution with Data Logger and remote maintenance of the device generating the alarm.

**Alert via SMS without cellular subscription**

The SMS Pack option enables you to send an alarm via SMS on a non-cellular Etic Telecom device having an ADSL, Wi-Fi or Ethernet WAN connectivity.

**Solution compatible with e\*message**

You can also send an alarm using the e\*message network (Alphapage) and receive a notification on a pager.

**Customization of the files**

You can configure the queried frequency and the number of variables. The size of the file to be stored but also its location is configurable.



+33 (0)4 76 04 20 00  
contact@etictelecom.com  
[www.etictelecom.com](http://www.etictelecom.com)



INDUSTRIAL NETWORKING