

# IA 512

512 Kb/s ISDN  
INVERSE-MULTIPLEXER



A wideband ISDN  
... at your fingertips

European approval  
N° CE 0167 X

**etic**  
TELECOMMUNICATIONS

## CHARACTERISTICS

56 to 512 kb/s over ISDN
4 EURO-ISDN basic rate interfaces
Autodialling: DTR, X21, synchronous and asynchronous V25 bis, RS366
Easy call control and unit management from front panel keyboard or VT100
64 kb/s T.A. interoperability
56 kb/s networks interoperability
Operates through PBX
Remote management through ISDN
BONDING 1, 2, 3 synchronization
2 DTE V11 / RS449 / V35 ports

## APPLICATIONS

Leased line back-up and overflow
High quality videoconferencing
Transfer of large files
LAN interconnection

With its 4 ISDN basic rate interfaces (BRI), the IA 512 inverse-multiplexer lets you dial up a synchronous ISDN communication with a user-selectable bandwidth from 56 to 512 kb/s.

As easy to install, use and maintain as a modem, the IA 512 offers manual dialing via built-in keypad or a VT100 terminal, automatic dialing, remote management via ISDN and standard interfaces with the data terminal.

Because it uses the BONDING synchronization standard, the IA 512 is compatible with most inverse-multiplexers and 56 / 64 kb/s terminal adapters.

# HIGH QUALITY VIDEOCONFERENCING

## Productive

The IA 512 is the key to High Quality videoconferences over the ISDN. The picture is sharp and clear, suitable for projection on a large screen.

Motion is correctly transmitted; you can see facial expressions and participants' reactions.

The sound is clear.

The exchange of documents is simplified.

Videoconferences can finally be turned into productive meetings.

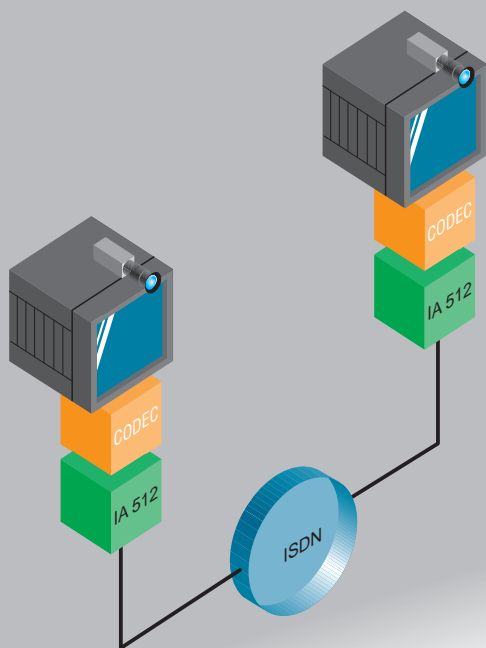
## Easy and economical

With the IA 512, worldwide videoconferencing is just a simple call away.

Picture quality and communication cost can be matched to conference requirements :

-For meetings of strategic importance, or when a number of participants are connected on each end, a 384 kb/s bandwidth can be dialed up to obtain the highest possible picture and sound quality.

-For routine conferences or international communication, a bandwidth of 128 kb/s can be used to cut communication costs.



# LEASED-LINE BACKUP AND OVERFLOW

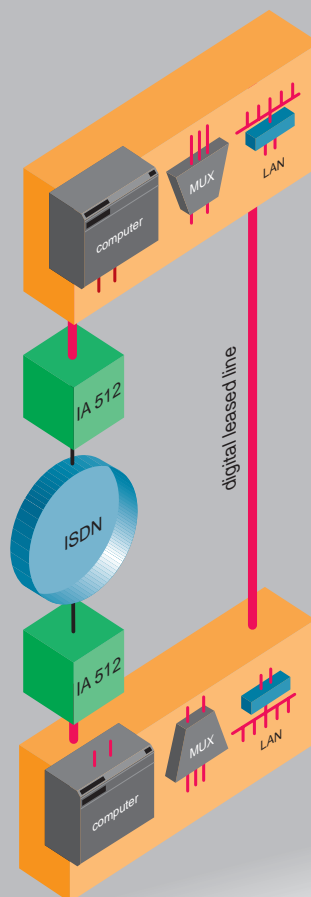
## Reliability and peak traffic offloading

64 kbit/s to 2 Mbit/s leased-line services provide an economical solution for average day-to-day transfer requirements (e.g. between different company sites). Breakdowns and handling traffic peaks can however be extremely costly.

The IA 512 can be used to set up hybrid networks (LEASED-LINE + ISDN).

The leased line handles the average traffic and ISDN provides backup and overflow capacity.

When the leased line fails or when traffic demand exceeds the line capacity, a simple command can be issued to call the receiver and set up a channel with a data rate of up to 512 kbit/s.

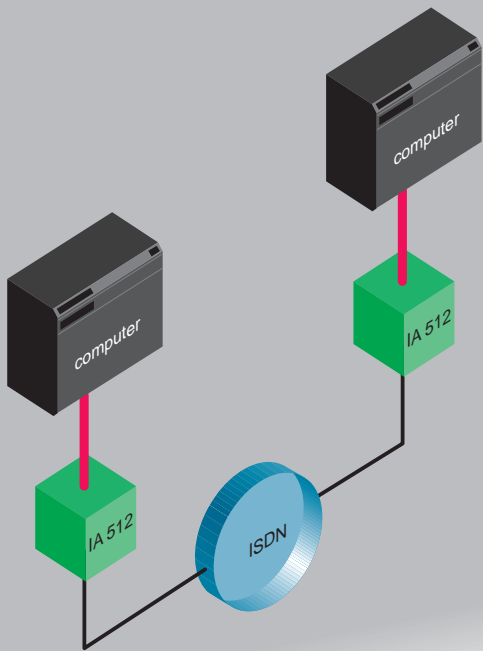


# TRANSFERRING LARGE FILES

## Transfer times cut by a factor of 8

Naturally the ISDN can be used to transfer large files at 64 kbit/s. But when files reach hundreds of megabytes and time is limited, transfers at 64 kbit/s become unfeasible.

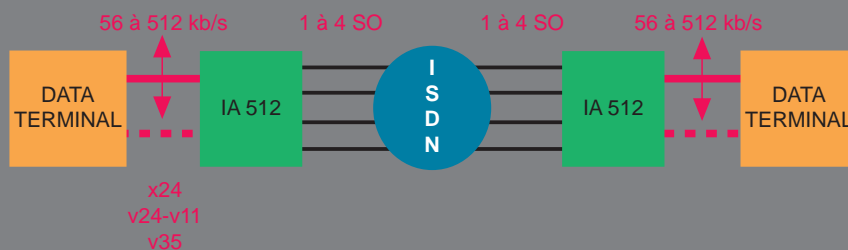
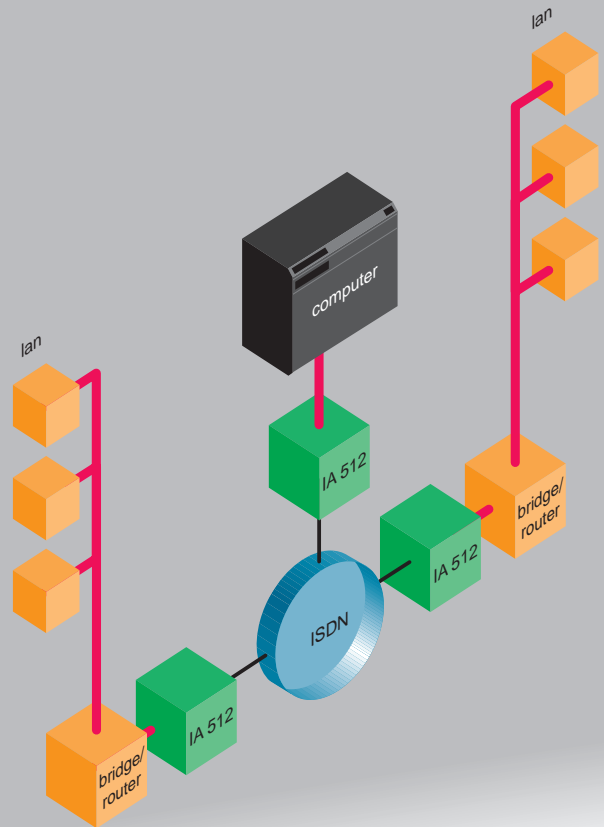
The IA 512 cuts transfer times by a factor of 8, ideal for sending very large files such as image data and also for backing up critical files at remote sites.



# LAN-TO-LAN COMMUNICATION

## High performance internetworking

The IA 512 offers the perfect solution to handle sporadic LAN-to-LAN traffic. On request from a bridge or router, the IA 512 sets up a channel with a data rate of 64 to 512 kbit/s.



## A 56 to 512 kb/s bandwidth-on-demand channel

After a command is issued by the user or automatically with standardized call sequences, the IA 512 dials the party's number and sets up and synchronizes the ISDN B channels. In just seconds, a connection providing a data rate up to 512 kb/s is established between two data terminals.

## Compatible

The IA 512 is approved all around Europe. Moreover, it uses the ANSI and ISO BONDING™ synchronization standard, allowing communication with most inverse-multiplexers and all terminal adapters worldwide, whether they are connected to an ISDN at 56 or 64 kb/s.

## Easy to use

To place a call, you just dial the party's number using the built-in keypad and specify the desired bandwidth, or select a number from the dialing directory.

The IA 512 can also be programmed to autodial using one of the standard command sets: Synchronous or asynchronous V25 bis, X21, RS 366, DTR control lead...

## Remote management

The installation menus, event logs, loops, can be used locally with a VT100 or remotely through ISDN.

Moreover, the IA512 software improvements can be downloaded through ISDN.

REFERENCES	DTE INTERFACE	
	V11/RS449	V35
512 kb/s	IA 512-42100	IA 512-42110
384 kb/s	IA 512-32100	IA 512-32110
256 kb/s	IA 512-22100	IA 512-22110
128 kb/s	IA 512-12100	IA 512-12110

## C H A R A C T E R I S T I C S

<b>Performance</b>	One 56 to 512 kb/s session via port 1 or two 56 or 64 kb/s sessions via port 1 et port 2  Internetworking with a unit connected to a 56 kb/s ISDN network.  Interoperability with 56 or 64 kb/s terminal adapters.
<b>DTE interfaces</b>	Two DTE synchronous interfaces : 1 main port (port 1) from 56 to 512 kb/s. 1 auxiliary port (port 2) at 56 or 64 kb/s. Each port can be RS449 or V24-V11 or V35.
<b>Auto-dialing</b>	Synchronous V25 bis (port 1) X21 (port 1 and port 2) RS366 (port 1 and port 2) Asynchronous V25 bis (CONTROL port) DTR control lead (port 1)
<b>User interface</b>	Built-in keyboard, or VT100 terminal.
<b>ISDN Interfaces</b>	4 basic rate interfaces (BRI) .
<b>Channel aggregation</b>	BONDING modes 0, 1, 2, 3, 3b
<b>Differential delay compensation</b>	512 ms
<b>Loops</b>	3C, 2B, A, 4, remote loop.
<b>Management</b>	Local via VT100 or via ISDN. Software downloading through ISDN.
<b>Dimensions</b>	442 X 65 x 285 mm (W X H X D).
<b>Installation</b>	Stand-alone or rackmount.
<b>Power-supply</b>	110V to 240 V.
<b>Operating temperature</b>	+10 °C to +50 °C
<b>Electrical safety</b>	EN41003 / EN60950 / CEI 801-2 level 4
<b>E.M.C.</b>	EN55022 / EN50082-1 CEI 801-3 level 2 / CEI 801-4 level 2
<b>Supported ISDN protocols</b>	ETSI EURO-ISDN / France Telecom VN2 / VN3 / VN4 / VN4+ / Deutsche telekom ITR6 / British Telecom ISDN2 / Belgium V1 / Swedish Televerket AT&T E5SS / Northern Telecom DMS100 / US national ISDN 1 and ISDN 2 / Australian Telecom 1 / NTT / Kokusai / Hong-Kong

DISTRIBUTOR

### ETIC Télécommunications

13, chemin du Vieux-Chêne  
38240 Meylan  
FRANCE  
TEL. (33) 76 04 20 00  
Fax (33) 76 04 20 01

