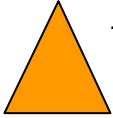


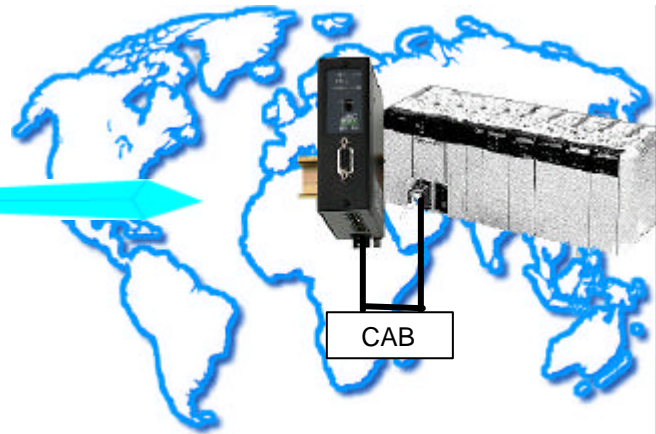
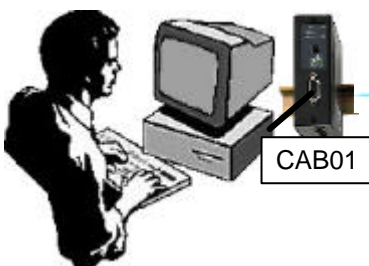
1. PURPOSE

To use the PSS PG programming software through the PSTN : Downloading of programs, diagnosis, adjustment....



The user shall make sure that the operations carried out are not dangerous for people and for the equipment.

2. SYNOPSIS



3. CABLES

CAB01		CAB	
P.C. 9-pin female SubD	Modem 9-pin male SubD	CIF 11 Screw block	Modem Cable end
1	1 CD	SDB	6 A
2	2 Rx	SDA	5 B
3	3 Tx	RDB	7 A'
4	4 DTR	RDA	8 B'
5	5 SG		
6	6 DSR		
7	7 RTS		
8	8 CTS		
9	9 RI		

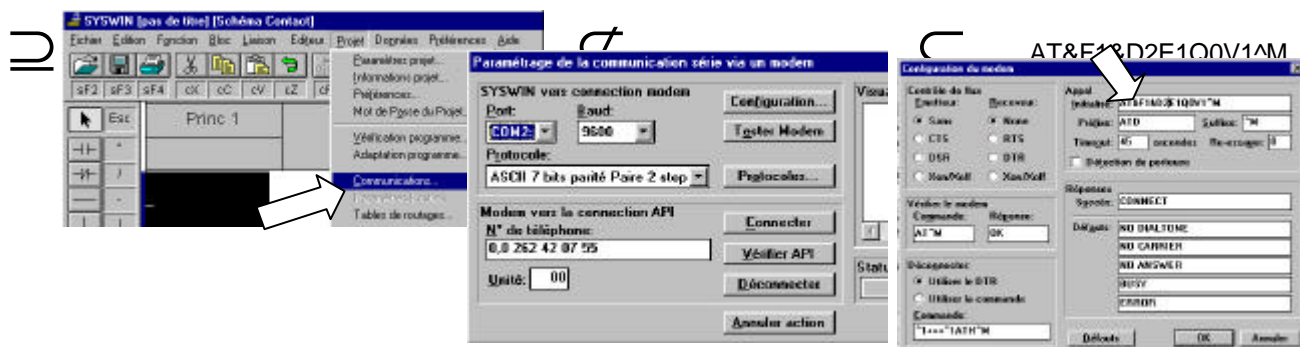
4. INSTRUCTIONS

4.1. Configuring the modem (MTI133-101) for use with the PLC

- 1 Open the WINDOWS Terminal or Hyperterminal. Set data rate at 9600 b/s and frame at 7 bits - parity EVEN - 2 STOP (7E1).
- 2 Connect the modem to the PC with a normal DCE to DTE RS232 cable (pin1 to pin1, pin2 to pin2,..., pin9 to pin9) (ETIC ref. CAB01).
Connect the modem to the power adapter and switch it on.
- 3 Enter AT&F1 to select factory profile N°1. The modem returns OK.
- 4 Enter AT&W1. The modem returns OK. *
- 5 Enter AT&Y1. The modem returns OK. *
- 6 Switch off the modem and disconnect it from the PC. It is now ready to be installed on the PLC.

4.2. Configuring the P.C. (MTI133-100 modem)

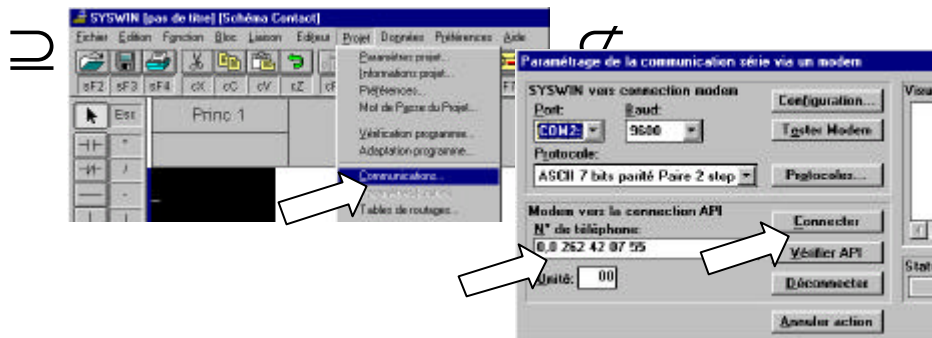
- 1 Open the SYSWIN software and enter the modem's transmission parameters.



5. USE

5.1. To call

- 1 Select the modem menu (1) and enter the call number (2).



- 2 Wait for the transmission (the LINE led switches on).