

1. PURPOSE

To use the SYSWIN programming software through the switched telephone network :
Downloading of programs, diagnosis, adjustment....



The user shall make sure that the operations carried out are not dangerous for people and for the equipment.

2. SYNOPSIS



3. CABLES

CAB01		CAB553	
P.C.	Modem	PLC	Modem
9-pin female SubD	9-pin male SubD	9-pin male SubD	Cable end
1	1 CD	2	3 Tx
2	2 Rx	3	2 Rx
3	3 Tx	9	5 SG
4	4 DTR		
5	5 SG		
6	6 DSR		
7	7 RTS		
8	8 CTS		
9	9 RI		

4. INSTRUCTIONS

4.1. Configuring the modem for use with the PLC

- 1 Open WINDOWS Terminal or Hyperterminal. Set data rate at 9600 b/s and frame at 7 bits - parity EVEN - 2 STOP (7E2).
- 2 Connect the modem to the PC with an RS232 normal DTE to DCE cable (pin1 to pin1, pin2 to pin2...pin9 to pin9) (ETIC ref. CAB01). Connect the modem to the power adapter and switch it on.
- 3 Enter AT&F1\N3%C0S37=9. The modem returns OK.
- 4 Enter AT&W1. The modem returns OK. *
- 5 Enter AT&Y1. The modem returns OK. *
- 6 Switch off the modem and disconnect it from the PC. It is now ready to be installed on the PLC.

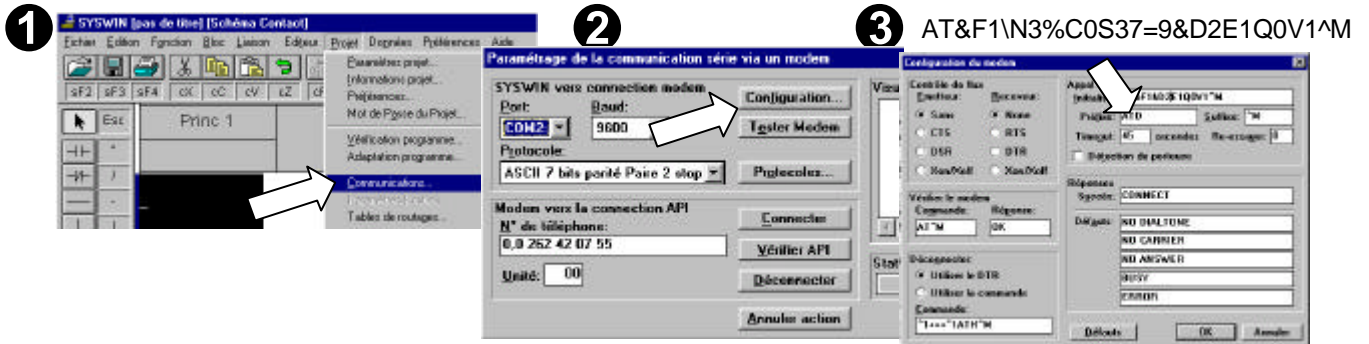
* refer to user guide at configuration

4.2. Connecting the modem to the PLC

- 1 Connect the modem to the PLC with the CAB553 cable.
- 2 Connect the modem to the telephone cable.

4.3. Configuring the P.C. (MTI133-100 modem)

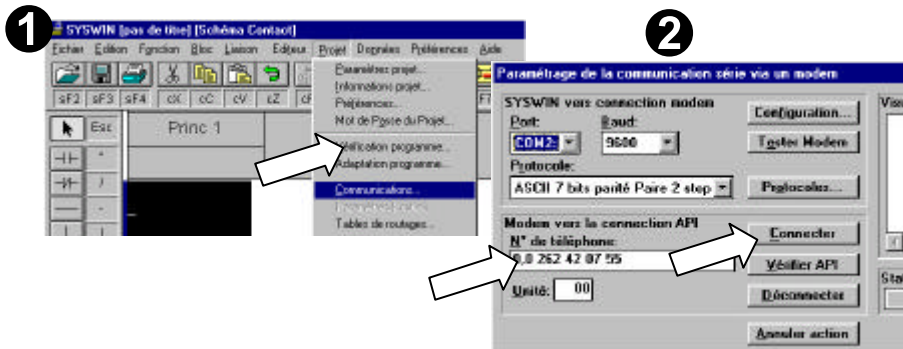
- 1 Open the SYSWIN programming software and enter the parameters for the modem transmission.



5. USE

5.1. To call

- 1 Select the modem menu (1) and enter a call number (2).



- 2 Wait for the transmission (the LINE led switches on).